

BUG Explorer™

LIVE INSECT VIEWER

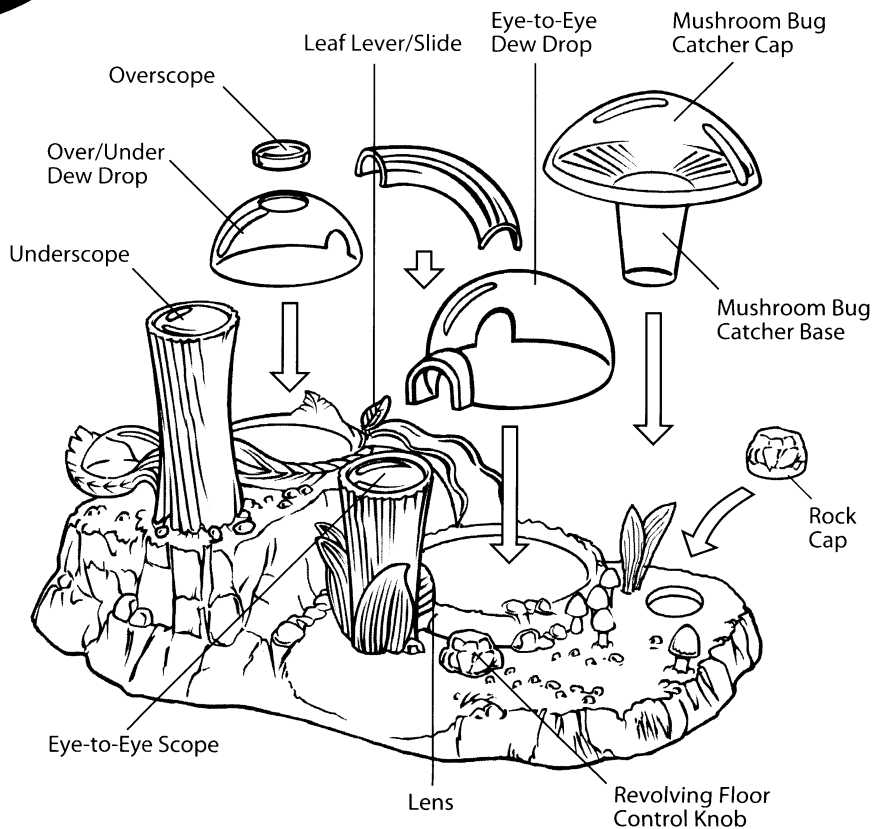
A Bug-ultimate Explorer!

Congratulations! You are the proud owner of the ultimate in bug viewers! Here is a picture of Bug Explorer showing all the main parts. You can look back at this picture as you read these instructions.

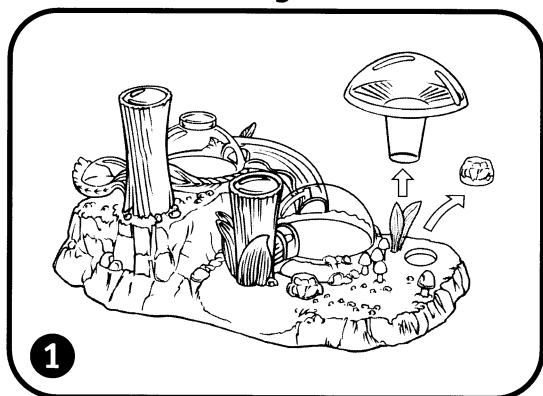
Bug Catching

Interesting bugs can be found almost anywhere — a field, a forest, a pond, your backyard. Some bugs are easy to see, and some are a little harder. When catching a bug, move very slowly so you don't frighten it. Remember that you are much bigger — and scarier — to it than it is to you!

Use the Mushroom Bug Catcher to collect a bug and carry it back to Bug Explorer. Find one bug at a time. When you've finished observing the bug in Bug Explorer, return it to where you found it and then you can look for another.

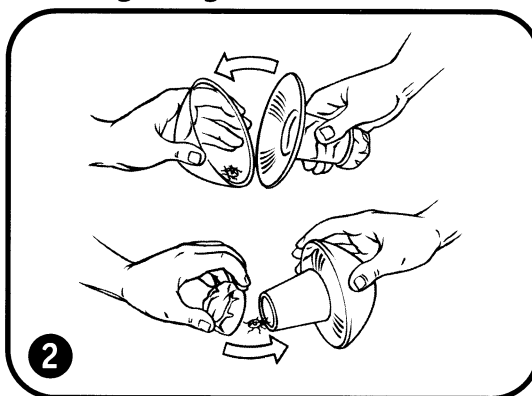


The Mushroom Bug Catcher



Remove both the Mushroom Bug Catcher and the Rock Cap from the base. Cover the small opening of the Mushroom Bug Catcher with the Rock Cap. Look for a bug that is no larger than the small opening of the Mushroom Bug Catcher.

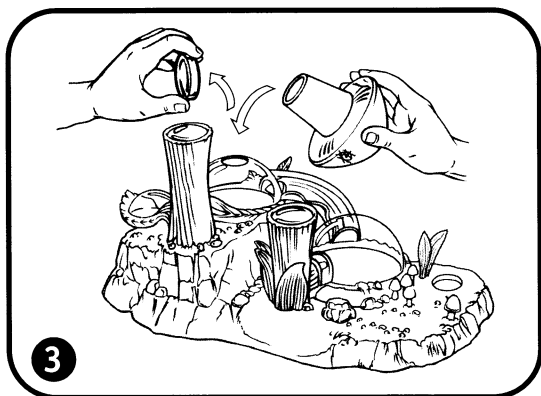
Catching a bug with the Mushroom Bug Catcher



Gently allow the bug to crawl into the Mushroom Bug Catcher from either the wide opening or the small opening. (Close the opening you are not using.) Sometimes it is helpful to use a twig or a leaf to gently help the bug in. When you have the bug inside, close the Mushroom Bug Catcher. (Remember to always treat bugs — and all other animals — with respect.)

KEEP THESE INSTRUCTIONS FOR FUTURE REFERENCE - DO NOT DISCARD

Introducing your bug to Bug Explorer™

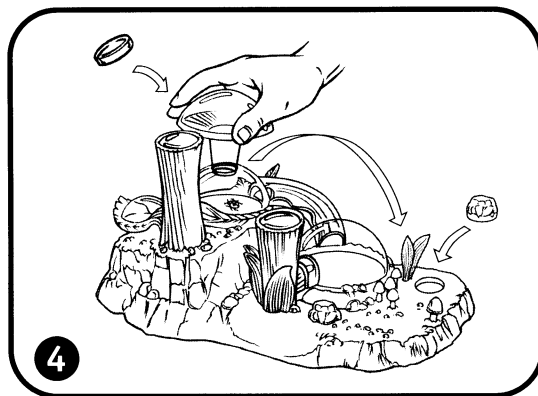


Make sure both Dew Drops and Leaf Slide are snapped securely in place. Now remove the magnifier cap from the Over/Under Dew Drop and carefully remove the Rock Cap from the Mushroom Bug Catcher and Slowly put the open end of the Mushroom Bug Catcher into the open hole of the Over/Under Dew Drop.

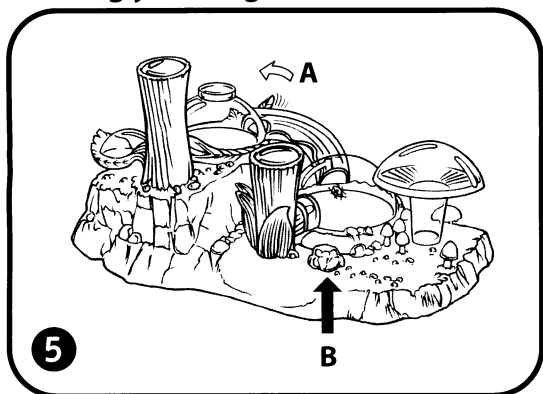
When the bug has entered, remove the Mushroom Bug Catcher and replace the magnifier cap onto the Over/Under Dew Drop. Return the Mushroom Bug Catcher and Rock Cap to their storage holes on the Base. Again, make sure the Dew Drops and Leaf Slide are snapped securely in place.

Always remember this: Never place Bug Explorer in direct sun, or near any source of heat, such as an oven, heater vent or fireplace. This is especially important if your Bug Explorer has an occupant, namely, a bug! Put Bug Explorer on a stable surface that will not get shaken or bumped.

Securing your habitat Bug Explorer™



Viewing your bug



The Over/Under Dew Drop

Now that you have a bug inside Bug Explorer, it is time to take a closer look at it. Notice the Leaf Lever, where the Leaf Slide begins, just outside the Over/Under Dew Drop? That keeps your bug inside while you're observing it. But wait, do not open it yet! Let's examine your bug first.

Use the Overscope and the Underscope to observe your bug from the top, sides and from underneath.

When you are finished looking at your bug in the Over/Under Dew Drop, open the door to the Leaf Slide by lifting the Leaf Lever (A) and allow your bug to cross over to the next dew drop.

The Eye-to-Eye Dew Drop

Now, in order to see how a bug views the world around it, we need to get down to a bug's-eye level! This is where the Eye-to-Eye Scope comes in.

Once your bug has entered the Eye-to-Eye Dew Drop, find the Rock Knob, (B) gently turn it, and see what happens. The bug revolves on the floor of the dew drop! This is an easy way to get your bug into view. Just turn the Rock Knob slowly and carefully in either direction, until your bug is directly in front of the Lens, and look through the Eye-to-Eye Scope.

When you are finished observing your bug, it is time to return it to the outside. Gently carry the entire Bug Explorer outside to the place where you found your bug. Carefully lift off the dew drop that the bug is in and allow the bug to crawl out.

Releasing your bug

